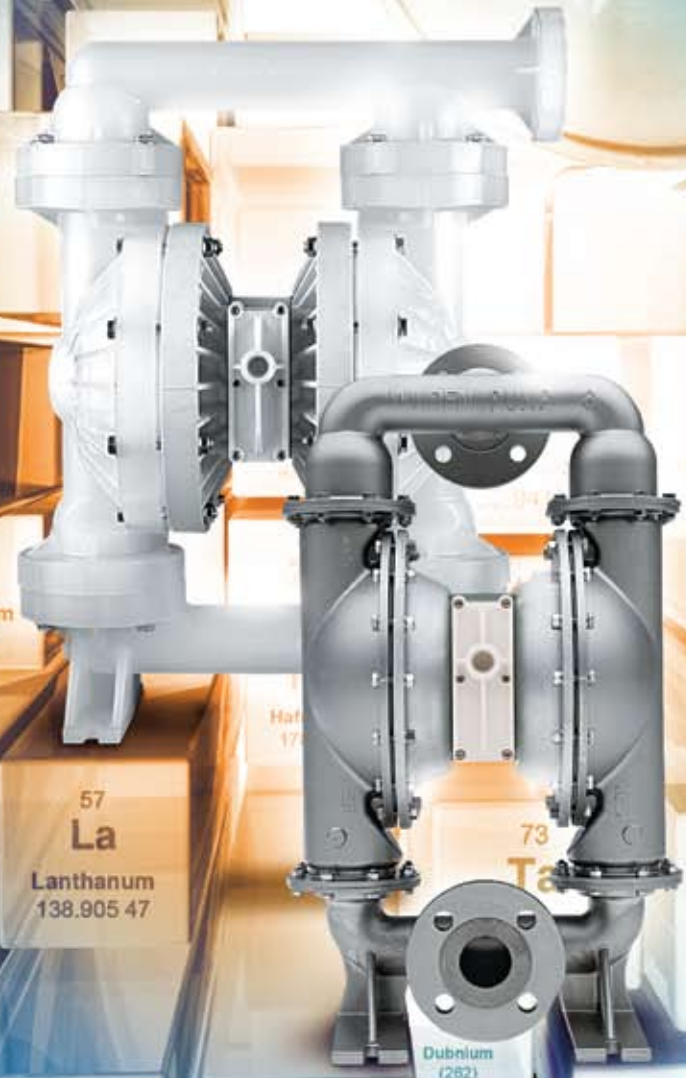


MOVE YOUR ACIDS AND COVER YOUR BASES

WITH WILDEN CHEMICAL TRANSFER PUMPS



WILDEN®

A DOVER COMPANY

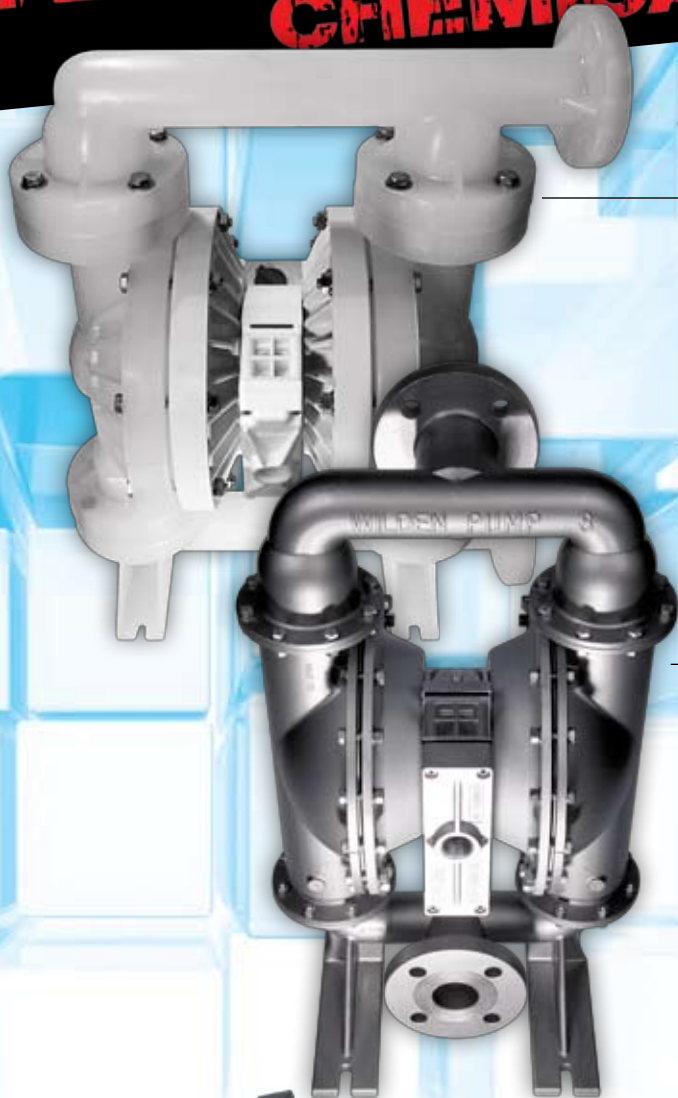
22069 VAN BUREN STREET • GRAND TERRACE, CA 92313-5607 • (909) 422-1730 • FAX (909) 783-3440

wildenpump.com

ADVANCE YOUR CHEMICAL PROCESS



ADVANCED SERIES



PLASTIC

FEATURES AND BENEFITS

- Superior Containment
- Portable & Submersible

PERFORMANCE

- Max. Flow Rate: 784 lpm (207 gpm)
- Max. Suction Lift: Wet 9.8 m (32'), Dry 6.6 m (21.6')
- Max. Size Solids: 12.7 mm (1/2")

TECH DATA

- Sizes: 6 mm (1/4") through 76 mm (3")
- Materials: Polypropylene, PVDF, PFA
- Elastomers: Buna-N, Neoprene, EPDM, Viton®, Wil-Flex™, Saniflex™, Polyurethane, PTFE

FEATURES AND BENEFITS

- Superior Containment
- Portable & Submersible
- ATEX Models Available

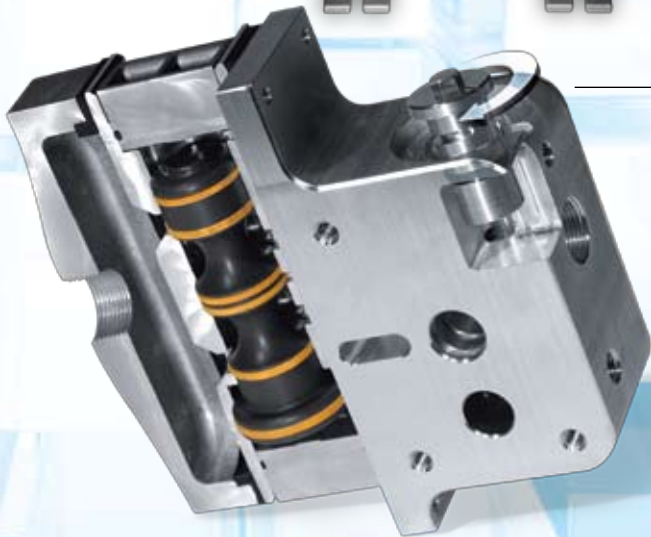
PERFORMANCE

- Max. Flow Rate: 1021 lpm (270 gpm)
- Max. Suction Lift: Wet 9.5 m (31.2'), Dry 7.6 m (25')
- Max. Size Solids: 76.0 mm (3")

TECH DATA

- Sizes: 6 mm (1/4") through 76 mm (3")
- Materials: Aluminum, Ductile Iron, Stainless Steel, Alloy C
- Elastomers: Buna-N, Neoprene, EPDM, Viton®, Wil-Flex™, Saniflex™, Polyurethane, PTFE

METAL



ADS



AIR DISTRIBUTION SYSTEM (ADS)

- Most Efficient Air Distribution System (GPM/SCFM)
- Variable Control (discharge flow rates & air consumption)
- Superior Flow Rates
- Superior Anti-Freezing
- On/Off Reliability



WILDEN®

A DOVER COMPANY

22069 Van Buren Street, Grand Terrace, CA 92313-5607
Telephone 909-422-1730 • Fax 909-783-3440
www.wildenpump.com

Your Local Distributor:

G&W Industrial Sales
915 Emerson Avenue
Parkersburg, WV 26104
304-422-4755
mail@gwindustrial.com